



Breeze Project - Advanced Cu-Mo-Ag Porphyry System in Central Arizona

Zona Metals Corp. is unlocking a district-scale copper opportunity through modern exploration, disciplined capital, and drill-ready permitting in one of the world's premier mining jurisdictions.

Investor Presentation
Q2 - 2026

Forward-looking Information

This presentation contains “forward-looking information” which may include, but is not limited to, statements with respect to the future financial or operating performance of Zona Metals Corp. (“Zona Metals”), its subsidiaries and its projects, the future price of gold, the estimation of Mineral Resources, operating and exploration expenditures, costs and timing of development of new deposits, costs and timing of future exploration, requirements for additional capital, government regulation, environmental risks, reclamation expenses, title disputes or claims and limitations of insurance coverage. Often, but not always, forward-looking statements can be identified by the use of words such as “plans”, “expects”, “is expected”, “budget”, “scheduled”, “estimates”, “forecasts”, “intends”, “anticipates”, or “believes” or variations (including negative variations) of such words and phrases, or state that certain actions, events or results “may”, “could”, “would”, “might” or “will” be taken, occur or be achieved. Forward-looking statements involve known and unknown risks, uncertainties and other factors which may cause the actual results, performance or achievements of Zona Metals and/or its subsidiaries to be materially different from any future results, performance or achievements expressed or implied by the forward-looking statements. Such factors include, among others, general business, economic, competitive, political and social uncertainties; the actual results of current exploration activities; conclusions of economic evaluations; changes in project parameters as plans continue to be refined; future price of gold; possible variations of ore grade or recovery rates; failure of plant, equipment or processes to operate as anticipated; accident, labour disputes and other risks of the mining industry; and delays in obtaining governmental approvals or financing or in the completion of development or construction activities. Although Zona Metals has attempted to identify important factors that could cause actual actions, events or results to differ materially from those described in forward-looking statements, there may be other factors that could cause actions, events or results to differ from those anticipated, estimated or intended. Forward-looking statements contained herein are made as of the date of this presentation and Zona Metals disclaims any obligation to update any forward-looking statements, whether as a result of new information, future events or results or otherwise. There can be no assurance that forward-looking statements will prove to be accurate, as actual results and future events could differ materially from those anticipated in such statements. Zona Metals undertakes no obligation to update forward-looking statements if circumstances or management’s estimates or opinions should change. Accordingly, the reader is cautioned not to place undue reliance on forward-looking statements.

QUALIFIED PERSON STATEMENT

All scientific and technical information contained in this corporate presentation was prepared or reviewed and approved by Paul Ténrière, P.Geo., Vice President of Exploration of Zona Metals Corp. who is a Qualified Person as defined by NI 43-101. Mr. Ténrière has verified the scientific and technical information disclosed in this corporate presentation by reviewing published scientific papers and historical reports and data, and recent exploration data (rock and soil geochemistry data, drone magnetic data, hyperspectral data summary report) collected by Zona Metals related to the Breeze Project that outlines its geology and structure, mineralization potential, and deposit style.



Executive Summary

Breeze Project - Cu-Mo-Ag Deposit with Historical Resource Estimate and Major Upside

- > Advanced exploration-stage porphyry Cu-Mo-Ag system in Yavapai County, Arizona.
- > Clear path to value:
 - Tier-1 Jurisdiction
 - Open to the N, W and at depth;
 - Year-round access & infrastructure;
- > Compelling geology: Laramide porphyry with mineralized cupola around quartz monzonite intrusive.

~44.5 Mt

Historical Inferred Resource Estimate (2012) at 0.39% CuEq (0.30% CuEq cut-off)¹

4,800 acres

Newly staked expansion to the north & west

9,300 m

Historical drilling completed (1967–2010)

282 Claims

On prospective USFS-administered public land

1 - This historical estimate is considered relevant as it demonstrates the 3D continuity of the Breeze deposit but is not considered reliable. A qualified person has not done sufficient work to classify the historical estimate as current mineral resources, and Zona Metals is not treating the historical estimate as current mineral resources.

About Zona Metals

Advancing High-Impact Porphyry Discoveries

- > Junior exploration company focused on the discovery of porphyry copper deposits in Arizona
- > Strategy centered on district-scale land positions and modern exploration
- > Committed to technical excellence, efficient capital use, and transparent disclosure
- > Year-round infrastructure and clear permitting pathway
- > Led by a seasoned technical and capital-markets team

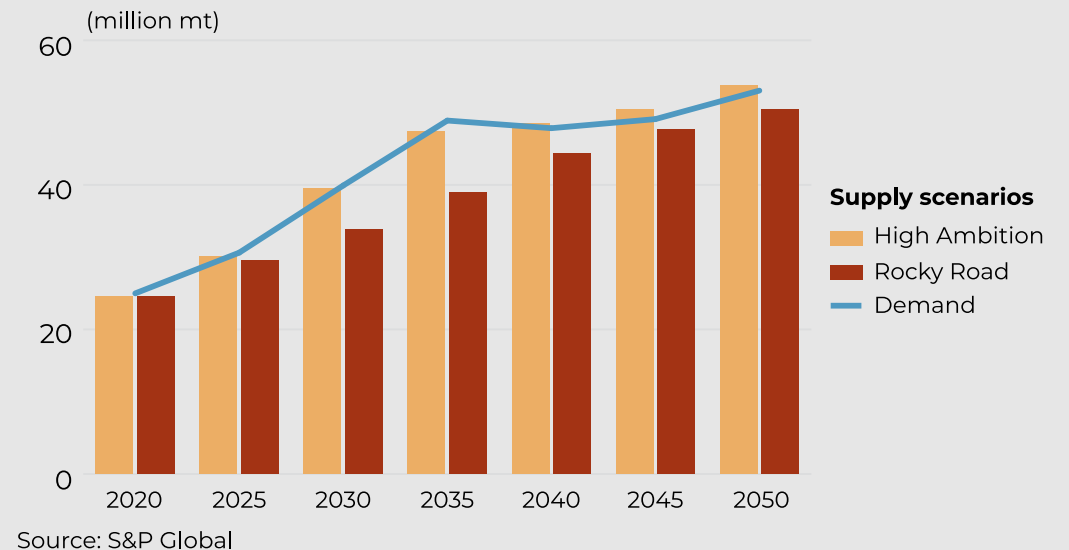


Copper-Molybdenum Opportunity

Copper & Moly Supply Deficits – Perfect Tailwinds

- > Copper market shifting to structural deficit: J.P. Morgan forecasts **~330 kt refined copper deficit in 2026**
- > Driven by AI data centers, EVs, renewables & grid build-out (S&P Global projects demand surging **50 % to 42 Mt by 2040**)
- > Analysts see copper prices **\$11,000–\$12,500/t in 2026** (J.P. Morgan avg **~\$12,075/t**)
- > Molybdenum demand rising steadily to **~500 kt/yr by 2034** for high-strength steel & energy infrastructure
- > **Arizona = #1 U.S. copper producer** (~70 % of national output – USGS Mineral Commodity Summaries 2026)

Global Copper Supply Scenarios & Demand



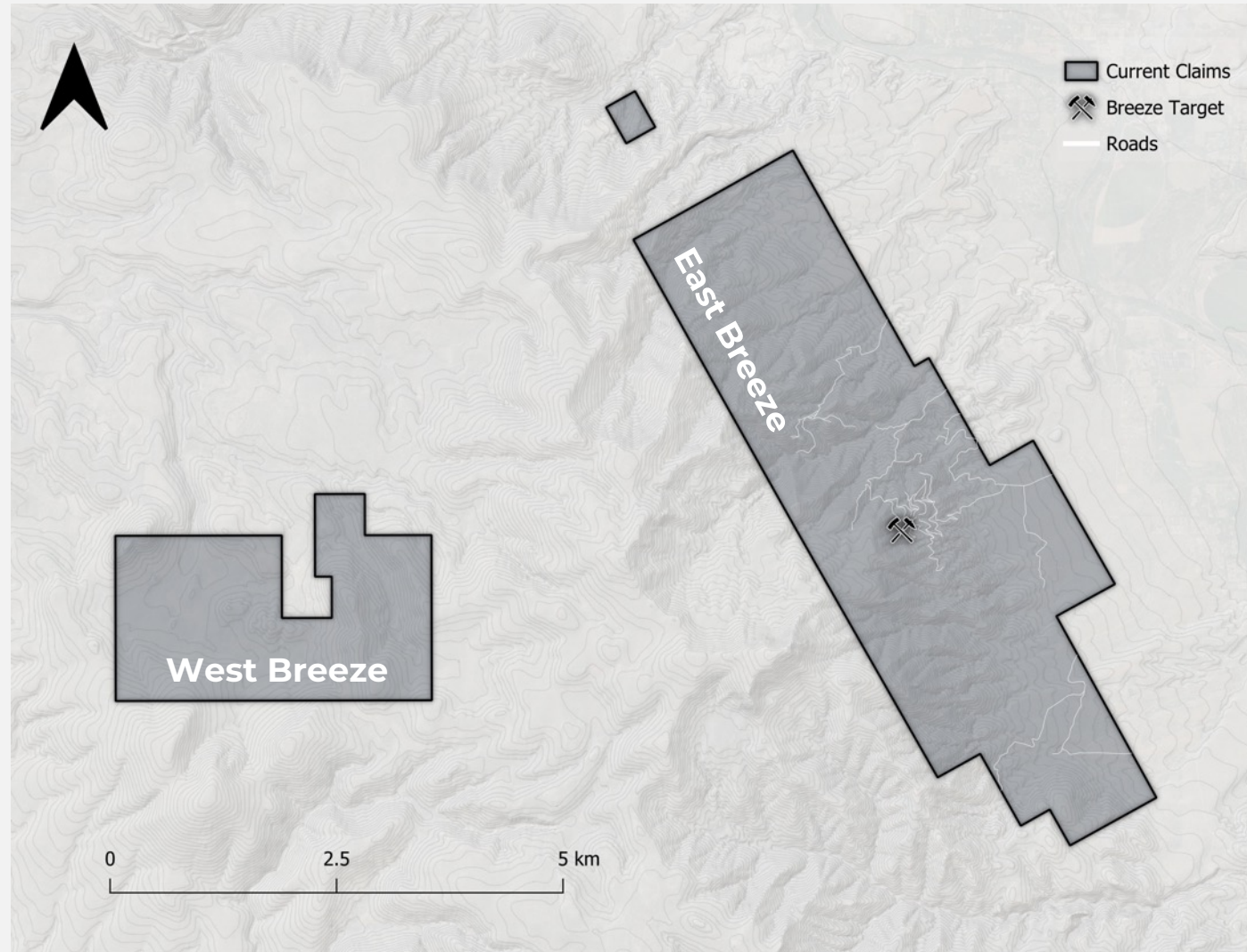
Sources: J.P. Morgan Global Research | S&P Global | USGS Mineral Commodity Summaries | SMR / Argus Media

LOCATION & ACCESS

Strategic Arizona Location

Infrastructure Ready

- > Central Arizona: ~65 miles (1.5 hours drive) NNE of Phoenix in Yavapai County
- > 126 km from Freeport-McMoRan’s Bagdad copper-molybdenum mine, which has produced approximately 5.0 Mt of copper and 175,000 tonnes of molybdenum since 1929. The operation currently hosts proven and probable reserves of 2,568 Mt grading 0.34% Cu (~8.655 Mt contained copper), with an 80-year remaining mine life. 5.5 miles south of Camp Verde (pop. 12,507)¹
- > Full-service town / city
- > Road Accessible with paved highway transitioning to truck-accessible dirt roads
- > Climate permits year-round fieldwork and operations

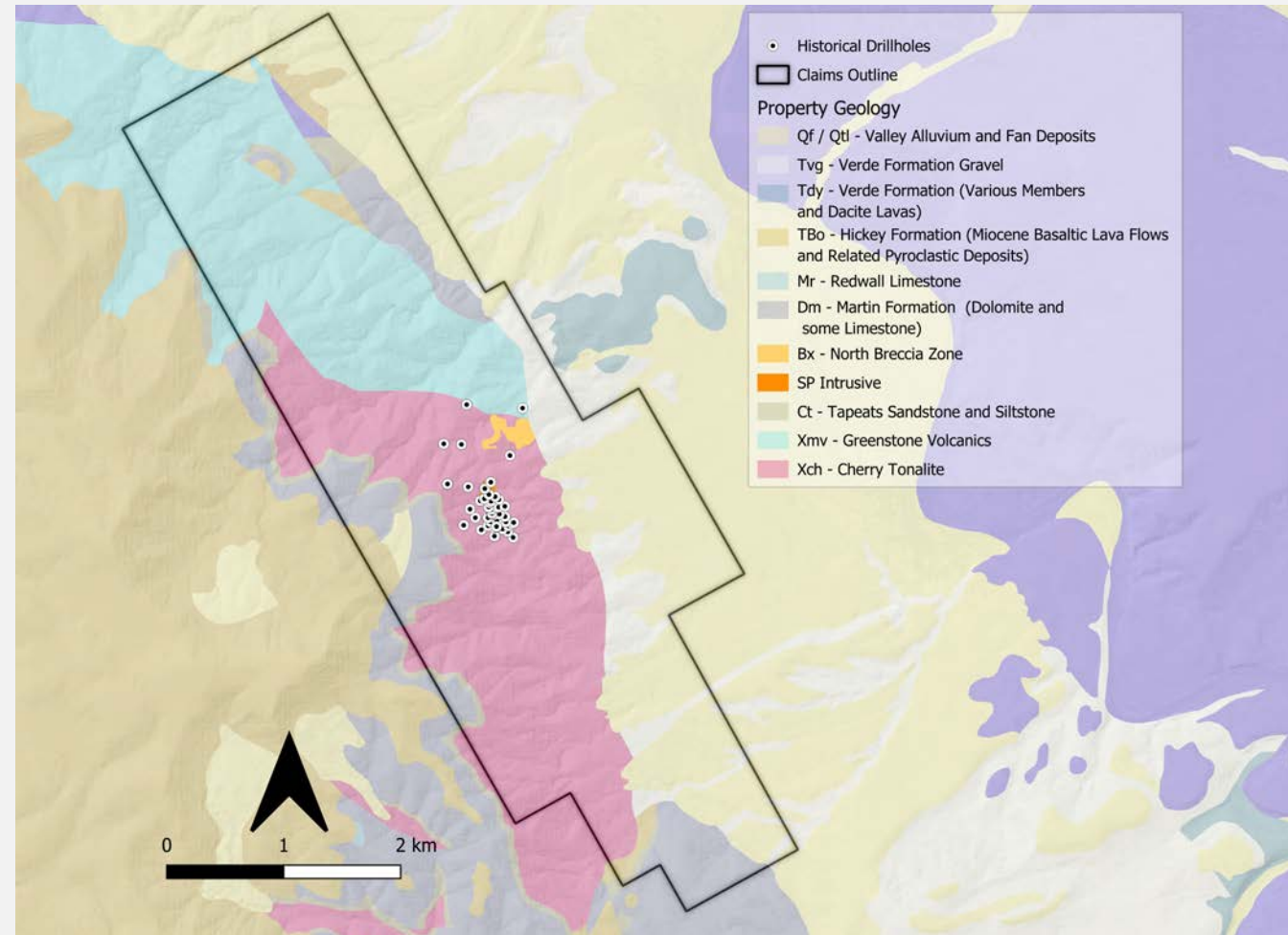


GEOLOGY

Historical Work

9,300 m Drilled - 44.5 Mt Historical Inferred Resource Estimate

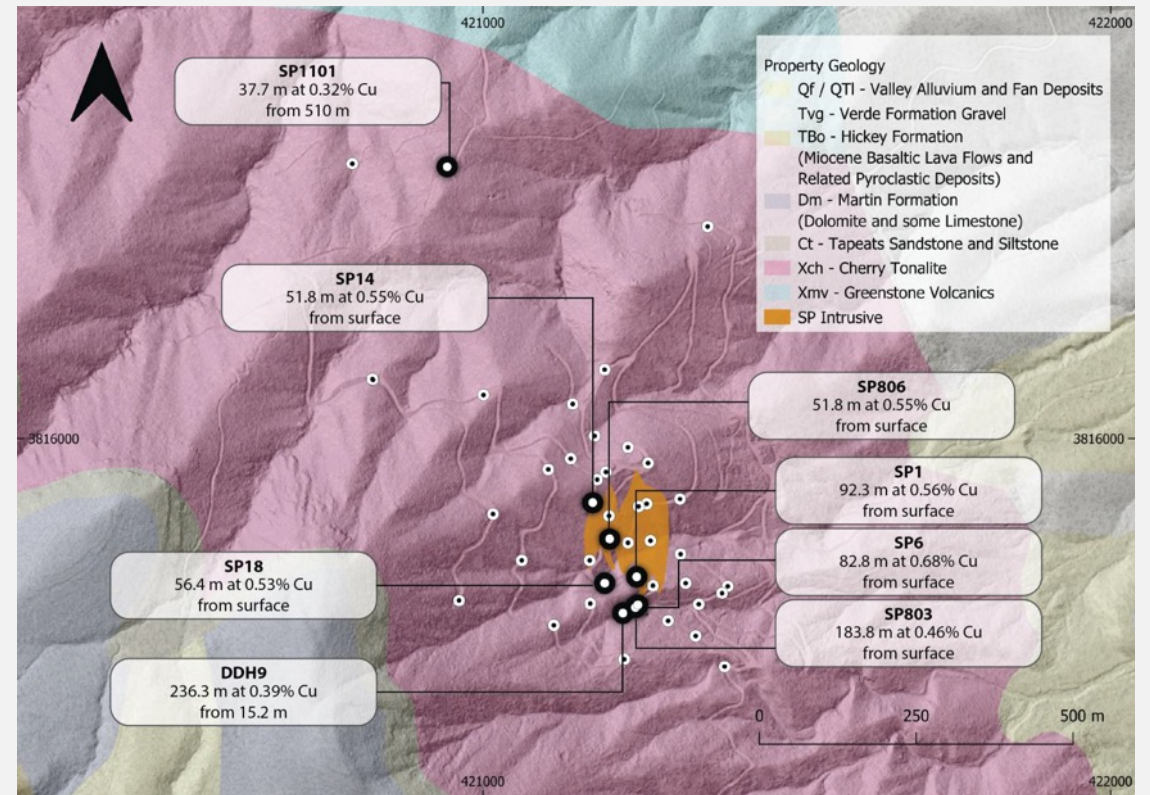
- > ~9300 m of historical drilling completed by various operators (1967 - 2010)
 - Historic:
 - Phillips Petroleum (1967–73) — 4949 m core; Essex (1973–74) — 1640 m rotary; others (Amax, Kennecott, etc.)
 - American Copper (2008): 13 core holes (~ 2039 m; intercepted continuous Cu–Mo–Ag mineralization in most holes)
 - Regal (2010): 2 NQ core holes (690 m) confirming near-surface mineralization and deeper potential to NW
- > Historical Estimate: ~44.5 million short tons @ 0.39% CuEq (cut-off 0.30% CuEq) completed in 2012
 - Average grades: 0.32% Cu, 0.012% Mo, 0.03 oz/t Ag
 - Contained metal (approx.): 285 Mlb Cu, 10.6 Mlb Mo, 1.2 Moz Ag
- > This historical estimate is considered relevant as it demonstrates the 3D continuity of the Breeze deposit but is not considered reliable. A qualified person has not done sufficient work to classify the historical estimate as current mineral resources, and Zona Metals is not treating the historical estimate as current mineral resources.



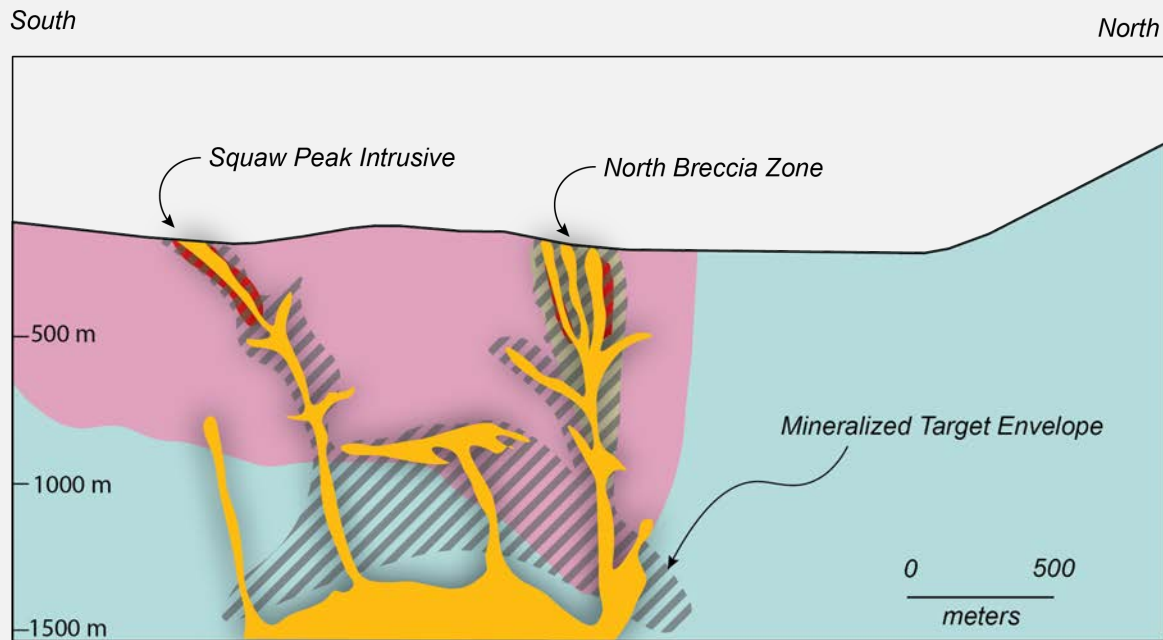
DRILLING HIGHLIGHTS

Select Historical Intercepts

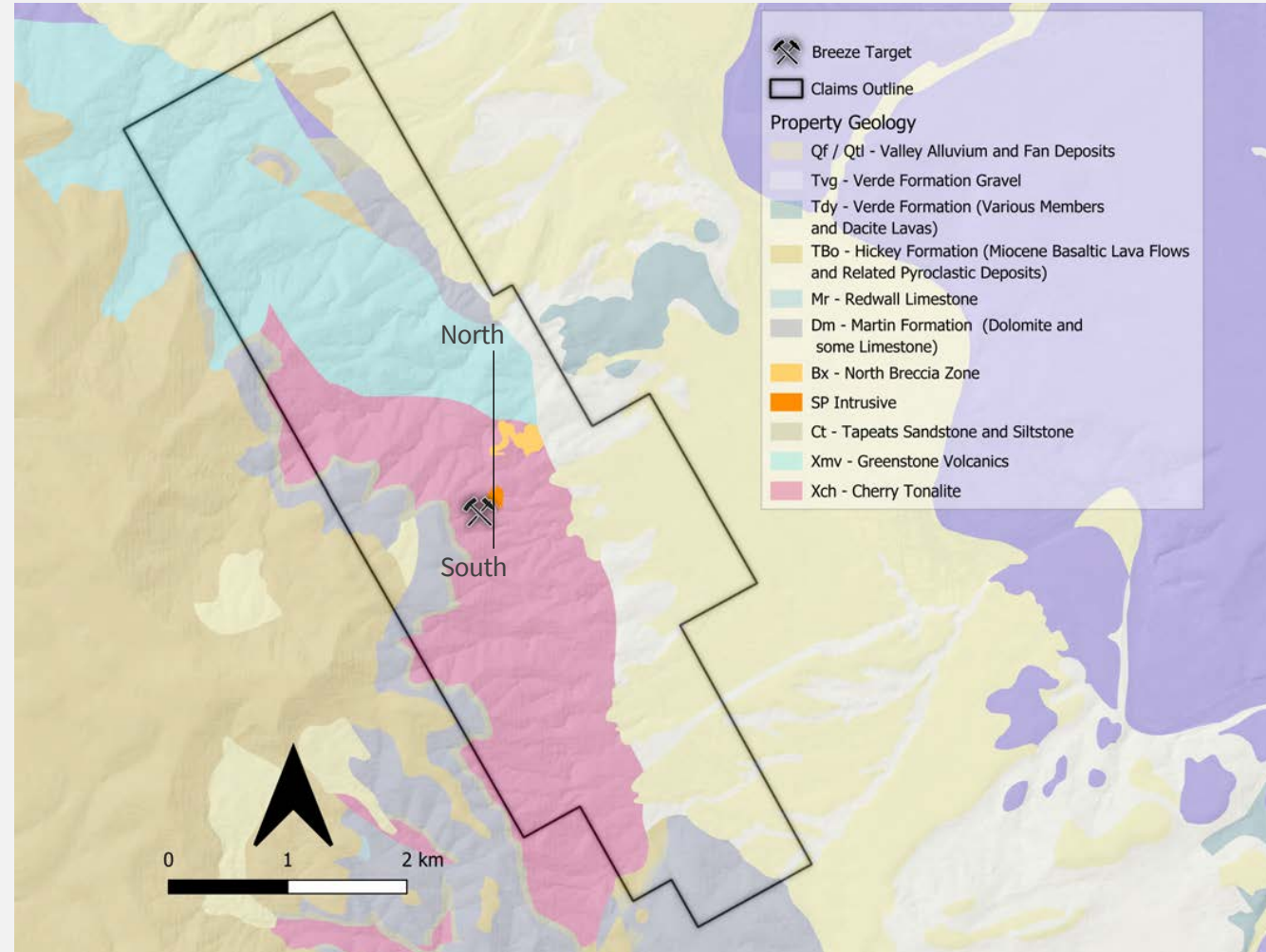
Drill Hole	From (m)	To (m)	Interval (m)	% Cu	% Mo	Notes
SP1	0	92.3	92.3	0.56	NA	Bottoms in mineralization, 0.48% Cu
SP6	0	82.8	82.8	0.68	NA	Bottoms in mineralization
SP14	0	51.8	51.8	0.55	NA	Bottoms in mineralization
SP18	0	56.4	56.4	0.53	NA	Bottoms in mineralization, 1.32% Cu
SP 0806	0	177.3	177.3	0.5	0.027	Bottoms in mineralization +0.1% Cu
SP 1101	510.9	548.6	37.7	0.32	0.007	~600 m step-out to the north of main mineralized core
DDH9	15.2	251.5	236.3	0.39	0.011	0.42% Cu Eq, Bottoms in mineralization
SP803	0	183.8	183.8	0.46	0.02	Bottoms in mineralization +0.1% Cu



Target Model

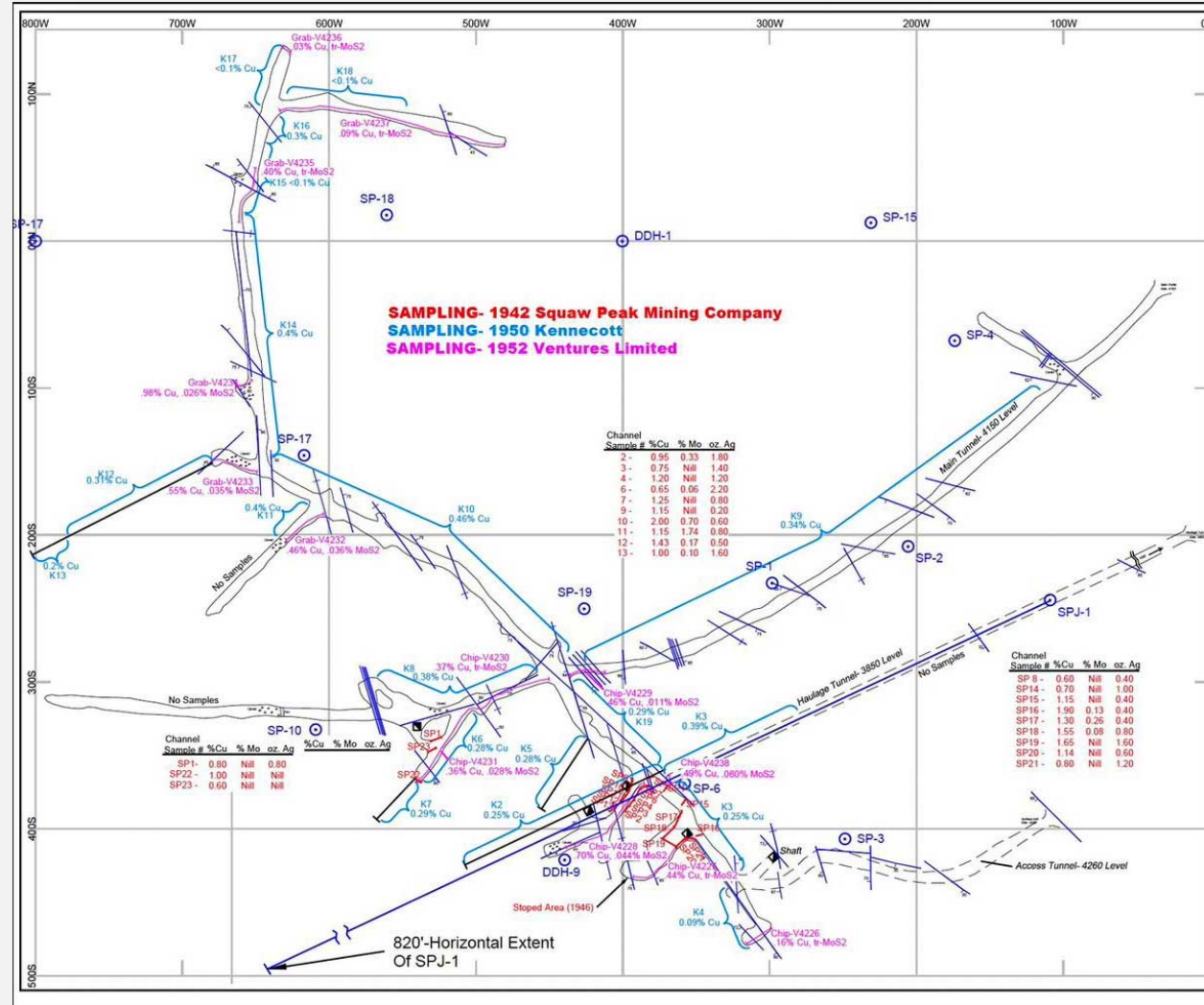


- Porphyry Intrusive
- Porphyry Copper Target
- Breccia
- Cherry Tonalite
- Greenstone



Squaw Peak Mine

- > Over 5400ft of historic workings
- > Approximately 5000 tons of production from a stope and drifts from 1944 to 1946.
- > Production reportedly averaged 1.2% copper and 0.45% molybdenum with minor silver and gold credits
- > Mining and flotation tests recoveries averaged 96% for copper and 55% for molybdenum. Metallurgical testing carried out in late 1960's



ZONA METALS CORP.
 Maps by MinQuest Inc.

Figure 9
SQUAW PEAK MINE
 Underground Mine Development
 Yavapai County, Arizona

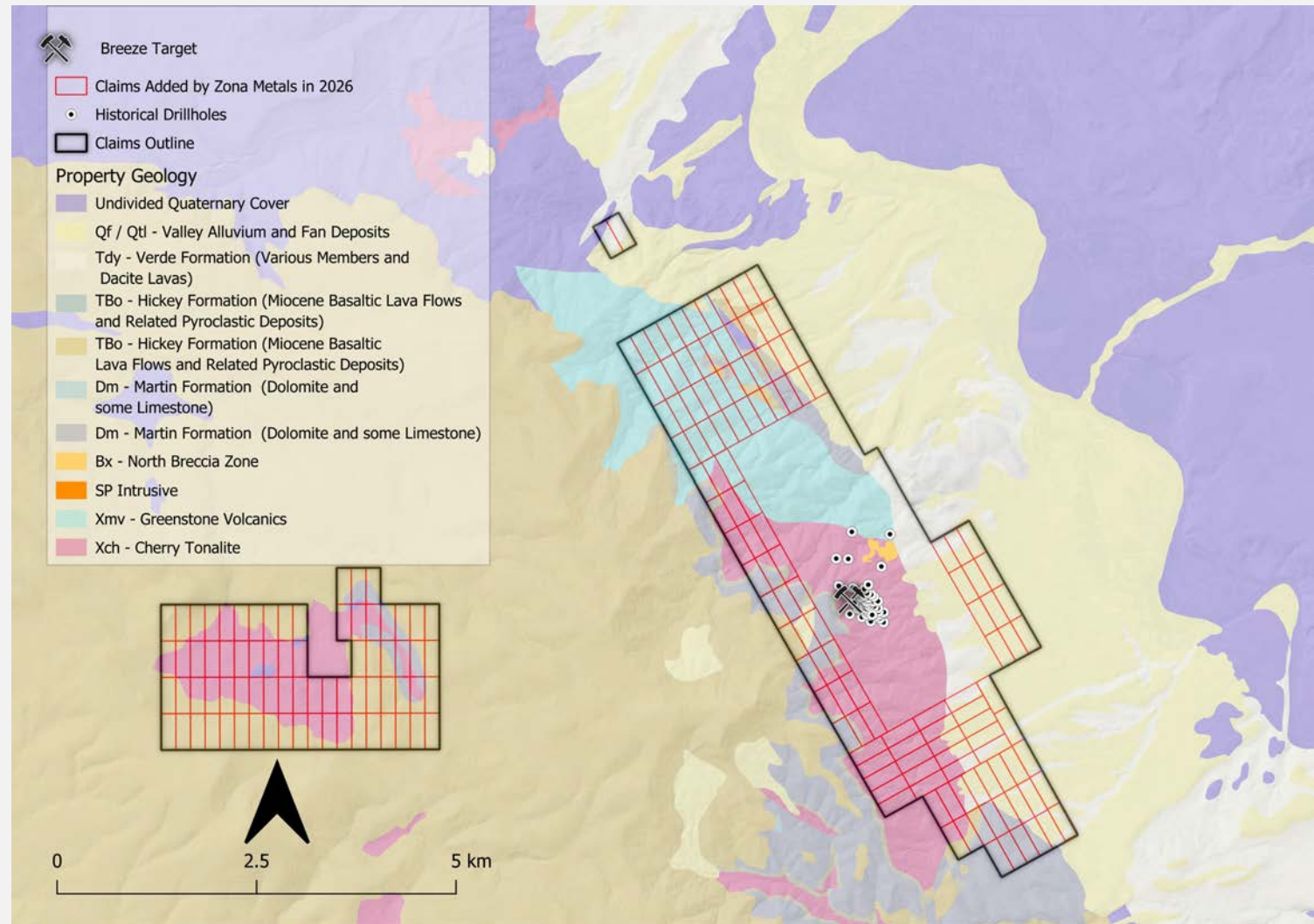
Date: EU
 Date: 6/26/06
 Drawn by: RRK

LOCATION & ACCESS

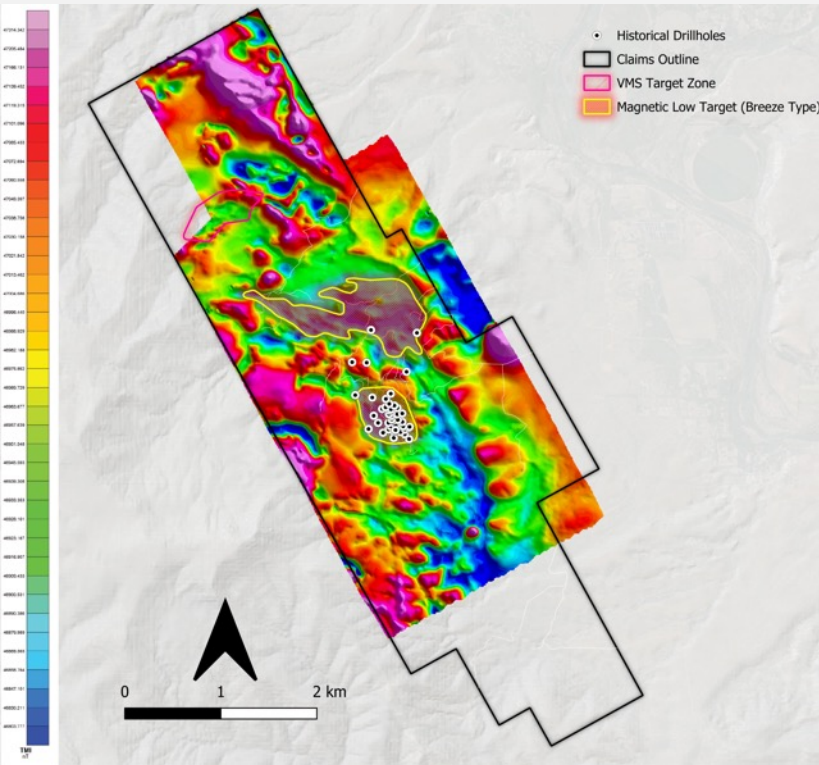
282 Claims with Expansion

Drill-Ready Permitting

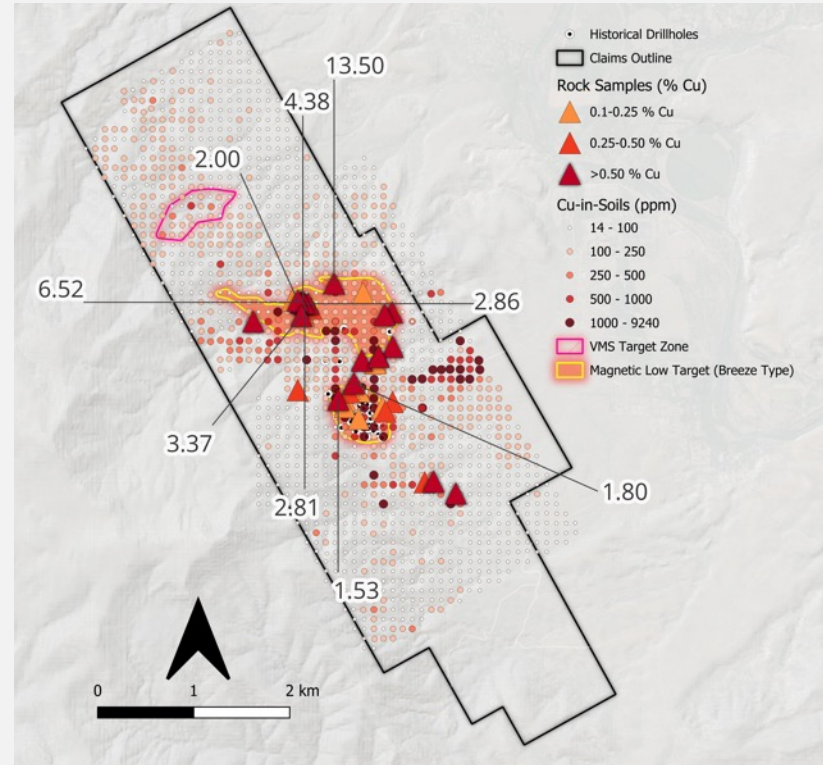
- > Land position is currently composed of 282 unpatented lode mining claims
- > Public land administered by USFS
- > Potential to expand claims to the North and West of current claim block into favourable geology.
- > Permitting will begin under a Categorical Exclusion (CE) to begin diamond drilling as soon as possible once public.
- > Newly Identified Copper target ~ 2000m long. Located ~1 km north of the historic SP copper resource.



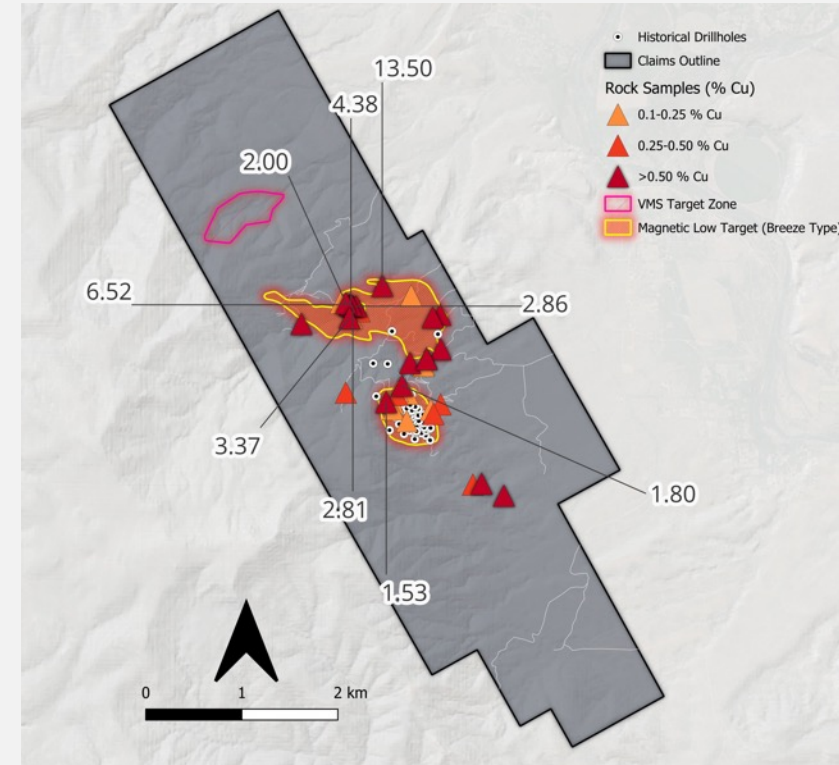
Early 2026 Exploration and Drone Magnetics Results



Drone Magnetic Survey Results



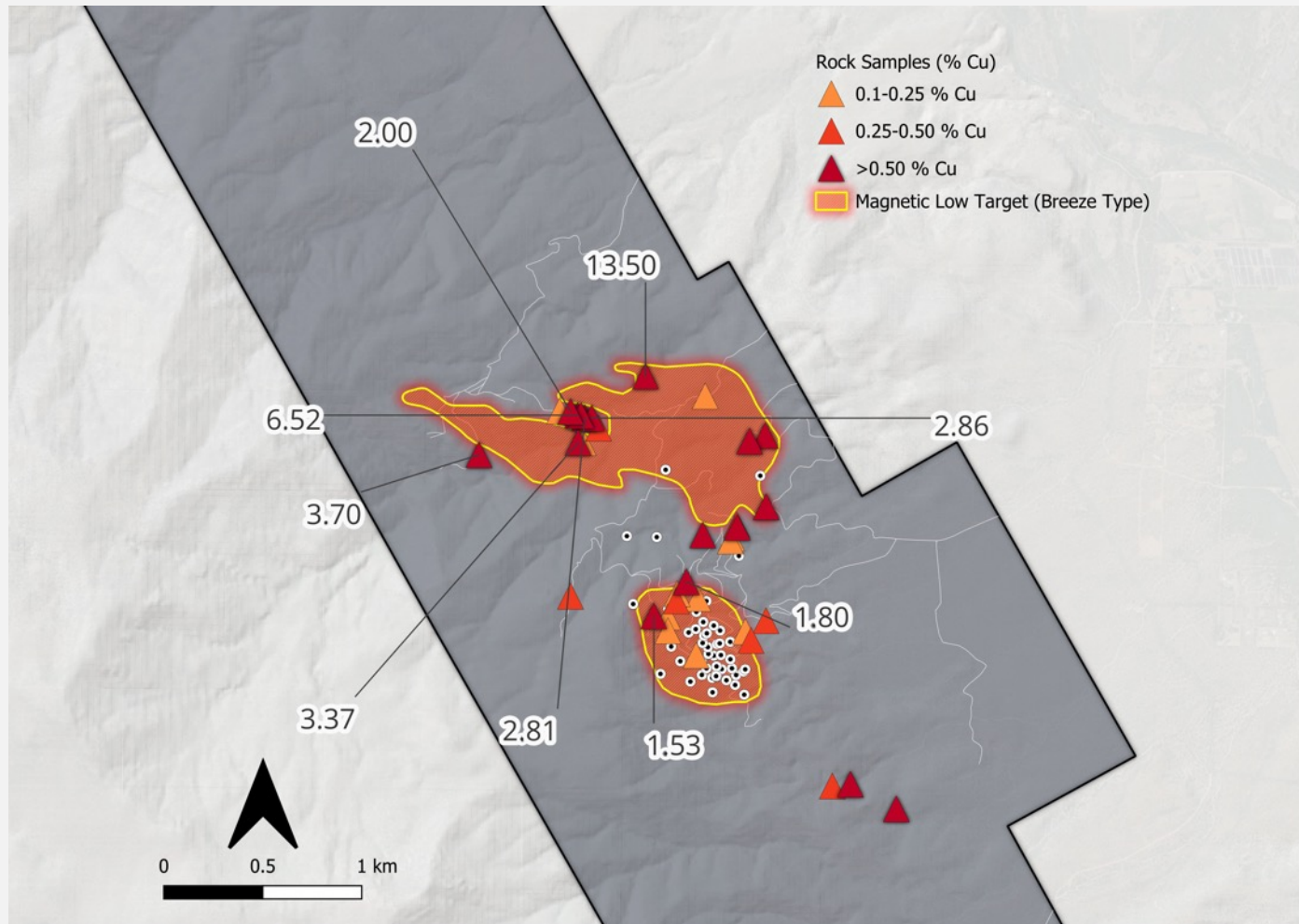
Copper-in-Soil Results



Copper Grab Sample Results

High Grade Copper Grab Samples From The Mag Low

> ~2000m-long Copper Target: Situated approximately 1 km north of the historic SP copper resource



**G018945 – 6.52% Cu
(Likely bornite.)**



**G018992 – 3.70% Cu
(Likely bornite)**

QSP - QUARTZ-SERICITE-PYRITE ZONE

Gossanous Outcrops

> Newly Identified Large Scale Quartz-Sericite-Pyrite Zone



Iron oxidized surface expression of Quartz-Sericite-Pyrite alteration in greenstone



Greenstone with strong Fe ox and Quartz-Sericite-Pyrite

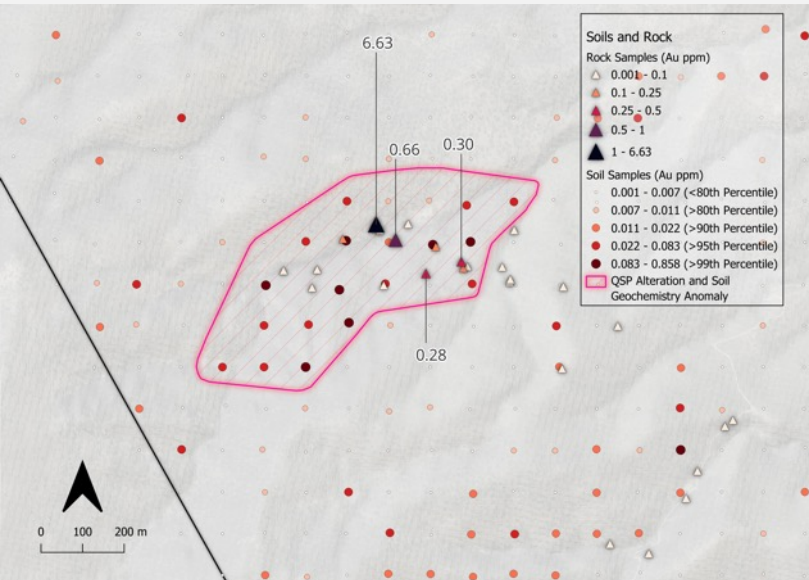


Very strong Quartz-Sericite-Pyrite alteration. Andesite volcanic protolith

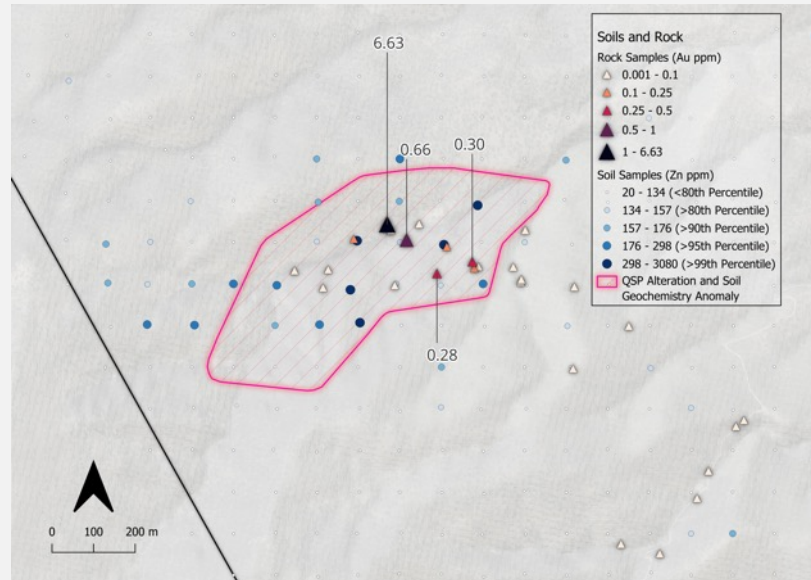
QUARTZ-SERICITE-PYRITE ZONE

Highlights

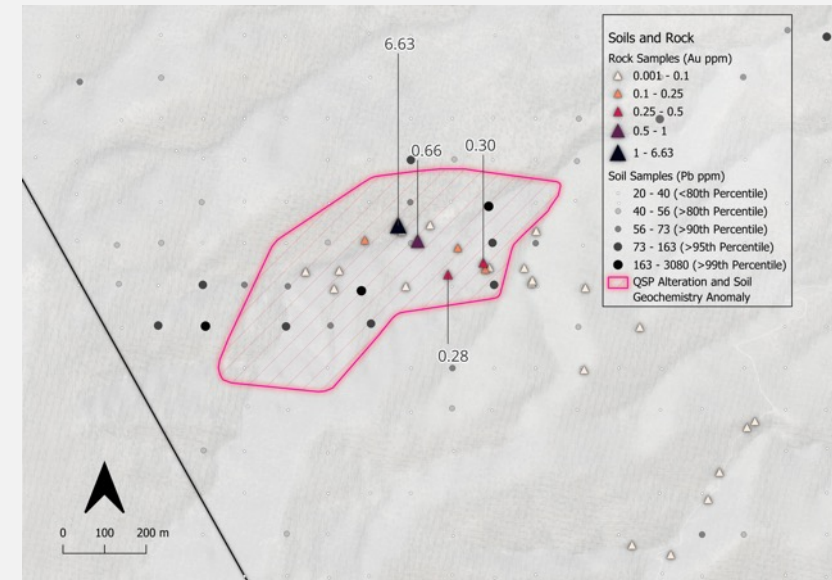
- > The Quartz-Sericite-Pyrite zone has multi-element soils extending ~800-1000m
- > Also anomalous in copper and silver.
- > 6.63 gpt Au grab sample and the 0.66 gpt Au grab sample



Au-in-soils (ppm)



Zn-in-soils (ppm)



Pb-in-soils (ppm)

Breeze Project



View of the North Breccia Zone



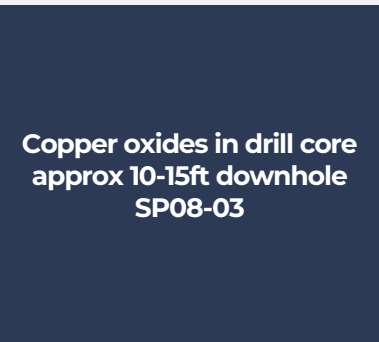
Strong clay alteration (advanced argillic) surrounding old adit at base of north breccia. Approximately 800-900m north of old Squaw Peak mine.



Old adit with VP Exploration Paul Teniere for scale.



Old Squaw Peak mine with residual copper-molybdenum-silver dump.



Copper oxides in drill core approx 10-15ft downhole SP08-03



Samples of potassic alteration with copper oxide. Approximately 1km north of the old Squaw Peak mine.



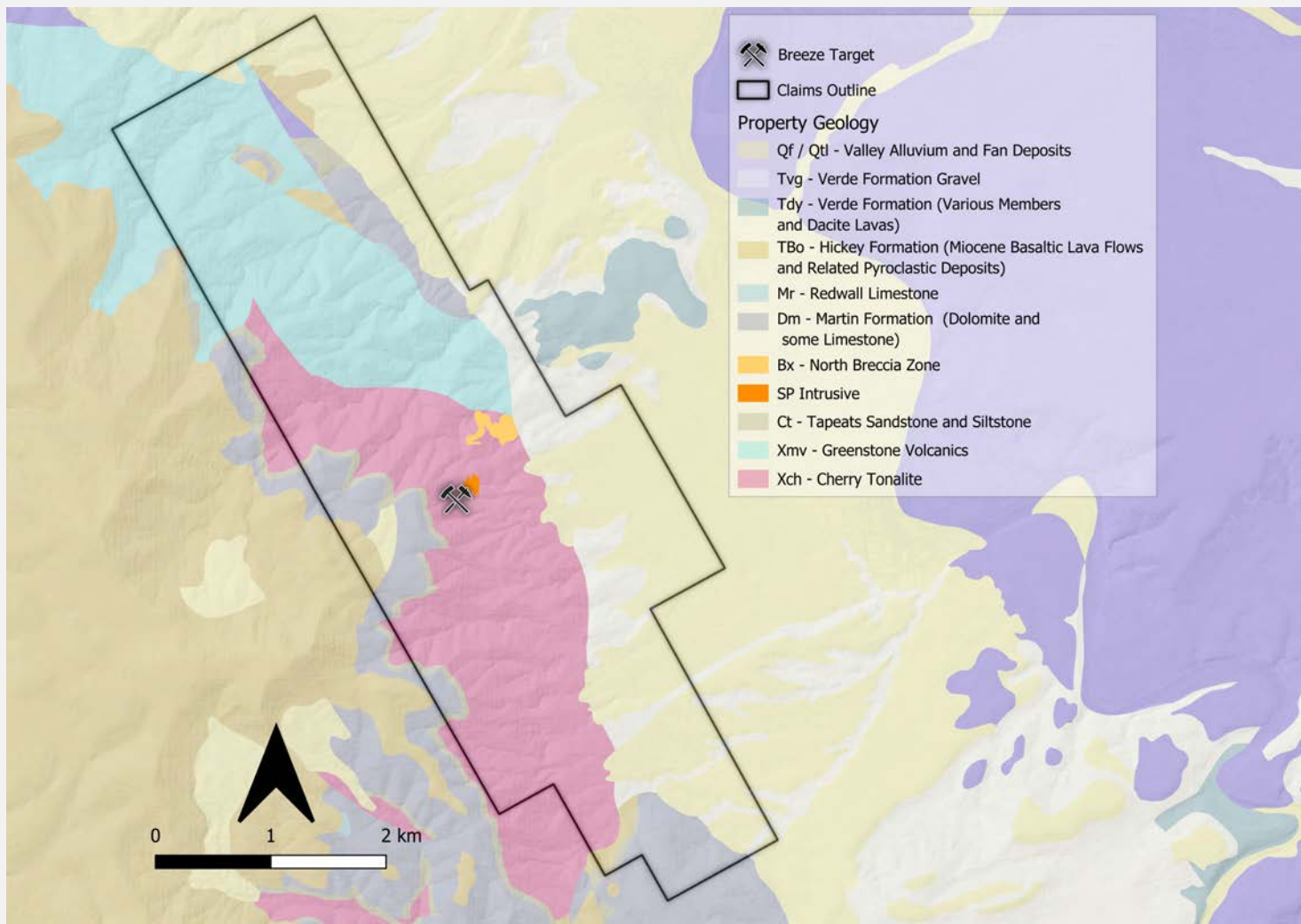
Mineralized Quartz Monzonite breccia approximately 800-900m north of historic Squaw Peak mine.

GEOLOGY

Classic Arizona Porphyry

Open in Three Directions

- > Located within the Proterozoic Yavapai greenstone belt (Transition Zone), intruded by granitoids.
- > Nearby stratigraphy: Cambrian Tapeats Fm. and Devonian Martin Fm. overlie Proterozoic basement.
- > Quartz monzonite 'spi' intrusive with a largely barren core; mineralized cupola in surrounding quartz monzonite.
- > Inner potassic/phyllic zone hosts chalcopyrite ± molybdenite in stockworks and fractures; outer propylitic halo.
- > Mineralization wraps 1,200 ft (NW) by 800 ft (width); open to north, west, and at depth.

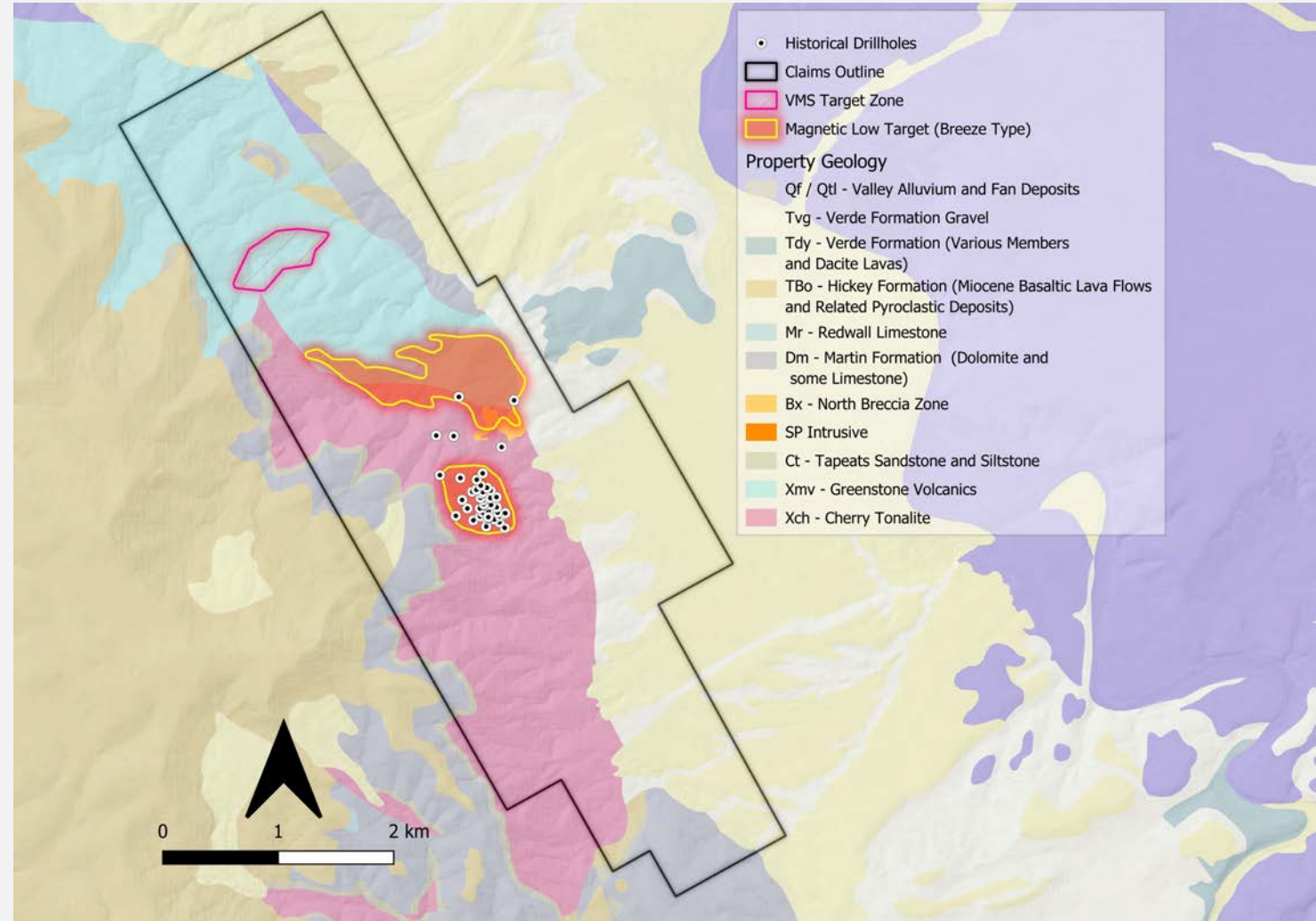


EXPLORATION POTENTIAL

Multiple Untested Targets

Strong Surface Indicators

- > Although significant drilling has been undertaken on the Breeze Target, several targets remain untested in the larger and expanded property
- > To the North of the Breeze target an extensive area of K-Feldspar altered rock and float exists that shows abundant copper oxide staining in combination with the presence of quartz stockworks
- > To the west of the main zone, an extensive quartz stockwork system exists with secondary copper oxides that has seen limited drilling
- > The Phase 1 program is now complete and results compiled. Phase 2 will now begin on newly staked claims and the preliminary exploration program including soils, rock sampling and mapping. Plus IP geophysics on top exploration candidates from phase 1.

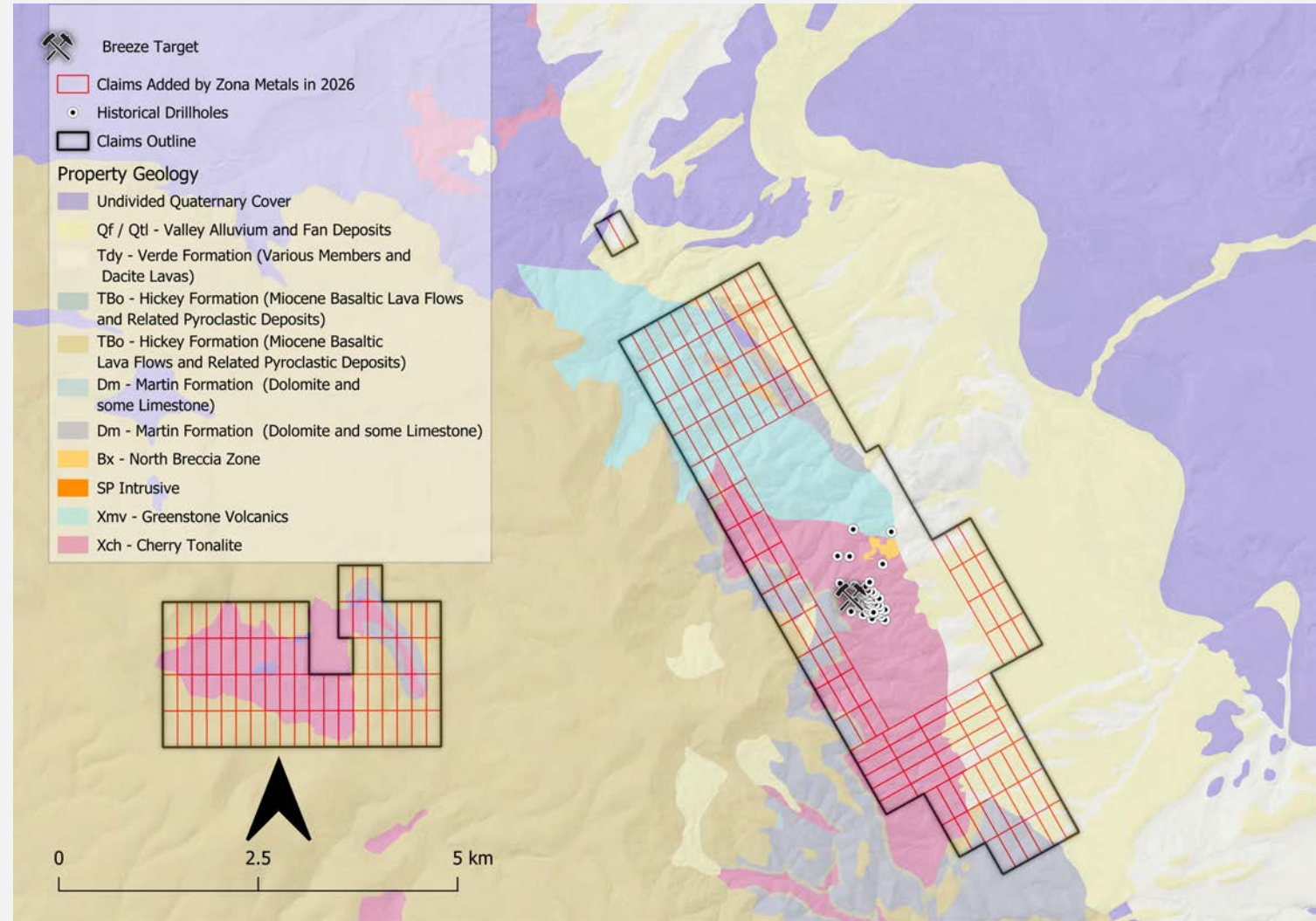


EXPANDED LAND PACKAGE

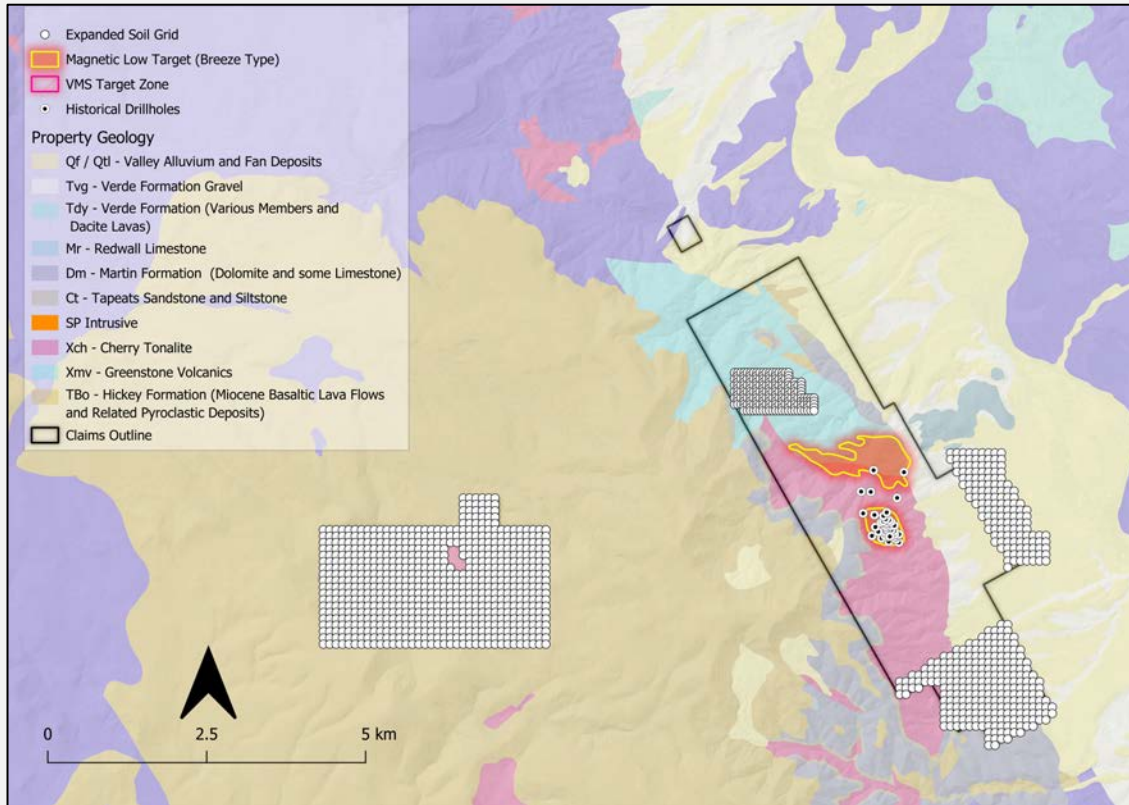
4,800+ Acres Newly Staked

North & West Expansion

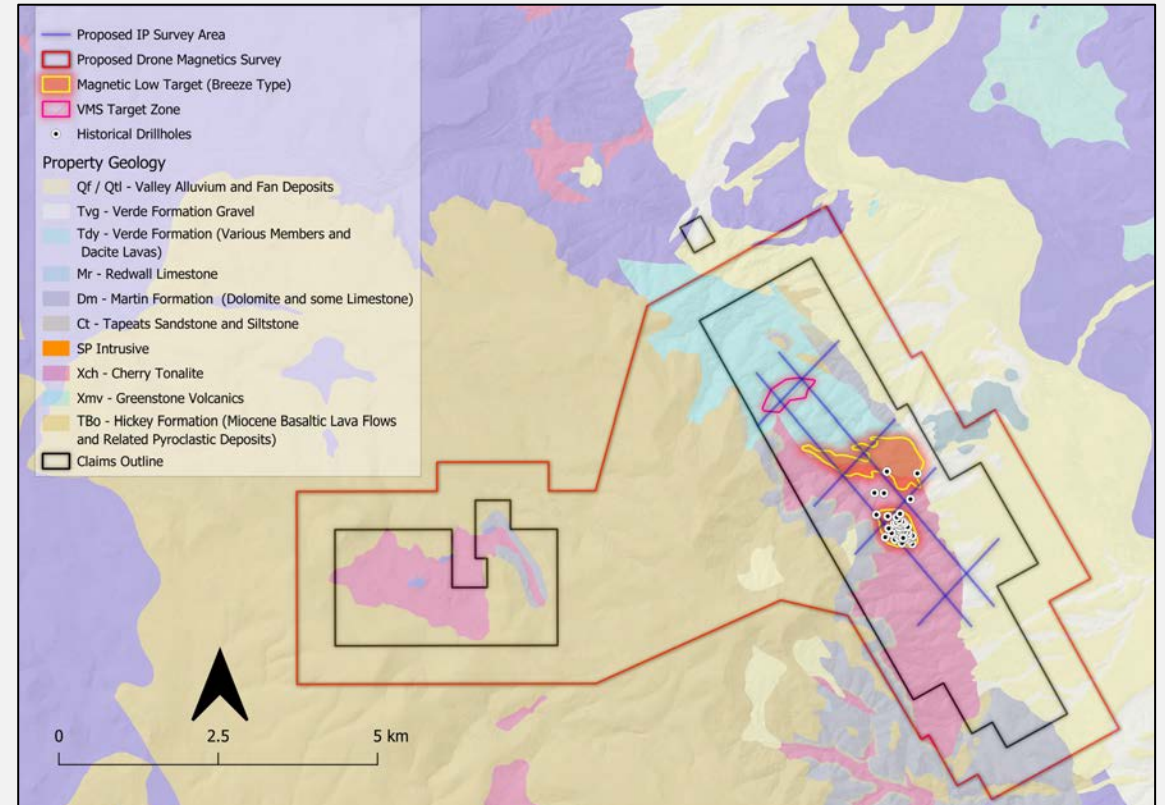
- > Zona Metals has added over 4,800 acres of additional property (5,826 acres total) to the north and west of the old claim block
- > The newly staked land package consists of highly prospective lithologies similar to those at the core of the Breeze property
- > This area will be explored in the preliminary 2025 exploration program
- > Western expansion staked based on a combination of known mineral occurrences and hyperspectral alteration signatures



Phase 2 Exploration Underway Week of May 18, 2026



- > Up to 1400 additional soils planned with additional rock sampling and mapping targeting new mineralized zones discovered in Phase I
- > Complete greenfields sampling to occur over the newly acquired western claim block



- > Follow-up drone magnetics and a preliminary IP survey (20 line-km)
- > Geophysics will work to refine targets and prepare for planned drilling in Q3/Q4 2026

WORK PROGRAM

2026 Exploration Roadmap

**Q1 2026**

- Expanded land position by 4,800 acres (complete)
- Soil Sampling, Rock Sampling and Mapping Program (complete)
- Drone Magnetics survey (complete)
- Begin Permitting with US Forest Service

**Q2 2026**

- Relogging of Historic Core
- Crews moving out to the property
- Interpretation of geochemical and geophysical results
- Continuation of Permitting with USFS
- Follow up geochemical and mapping reconnaissance
- Planning and completion of 2D Alpha IP Survey and other deep geophysical surveys to outline porphyry target
- AI-machine learning and prospectivity study using existing data acquired for drill hole planning purposes

**Q3 2026**

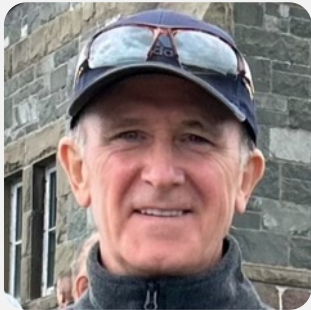
- Interpretation of geochemical and geophysical results
- Continuation of Permitting with USFS
- Follow up geochemical and mapping reconnaissance
- Anticipated go-public transaction

**Q4 2026 / Q1 2027**

- First Phase of Drilling
 - 1500-2000 m DDH



Management & Board



CHIEF EXECUTIVE OFFICER & DIRECTOR

Barry Greene, B.Sc., P.Ge.

Barry Greene is a seasoned geoscientist and mining executive with over 35 years of experience in mineral exploration, project development, and public company capital markets. A Professional Geologist (P.Ge.), he has advanced numerous precious and base metal projects across North America and internationally.

Barry currently serves as Chief Executive Officer and Director of Zona Metals Corp. He is recognized for combining technical excellence with disciplined governance and capital markets strategy to drive long-term shareholder value.



CHIEF FINANCIAL OFFICER & DIRECTOR

Ryan Cheung, CPA, CA

Ryan Cheung provides accounting, management, securities regulatory compliance services to private and public-listed companies. Mr. Cheung also serves as an officer and/or director of several public-listed companies. Mr. Cheung holds a Bachelor of Commerce degree from the University of Victoria and is a member of the Chartered Professional Accountants of British Columbia.

Management & Board



INDEPENDENT DIRECTOR

Colin Moore, MBA, B.Sc

Colin Moore is a mining executive and corporate finance professional. He has roughly 15 years of experience across the mining and finance sectors, including engineering, investment banking, private equity, and junior gold exploration. He co-founded Momentum Minerals in 2019 which was later acquired by Westward Gold in 2021—after which he took a leadership role in the company. Earlier in his career, he worked in mining-focused investment roles, including positions at Waterton Global Resource Management and Pacific Road Capital, and as an investment banker in the metals and mining group at Bank of Montreal. Mr. Moore holds a BSc in Mining Engineering and an MBA from Queen's University.



VICE PRESIDENT OF EXPLORATION

Paul Ténrière, M.Sc., P.Geo.

Paul Ténrière is a seasoned C-Suite mining executive and Professional Geologist (P.Geo.) with over 25 years of global experience in mineral exploration, project development, and public company capital markets. As a Qualified Person (QP) and recognized expert in NI 43-101 and S-K 1300 disclosure standards, he has developed numerous precious and base metal, critical minerals, and metallurgical coal deposits from exploration through to mine development.

Paul has held senior leadership roles including President & CEO, SVP – Exploration, and Director for multiple TSXV- and CSE-listed companies. He previously served as Senior Listings Manager and Mining Expert at the Toronto Stock Exchange and TSX Venture Exchange.

Share Structure

As of April 28, 2026

Common Shares –
Issued & Outstanding
31,150,001

Stock Options
1,000,000
@ \$0.10, Expire Feb 13, 2029

Warrants Outstanding
3,000,000
@ \$0.10, Expire Jun 2, 2027

Fully Diluted
35,150,001

Why Invest in Zona Metals

1

Tier-1 Arizona Location

Year-round access, 1.5 hour drive from Phoenix, drill-ready under Categorical Exclusion

2

District-Scale Land Package

282 claims + 5,826 acres staked into prospective ground

3

Solid Resource Foundation

44.5 Mt historical Inferred Resource @ 0.39% CuEq from 9,300 m drilling

4

Exciting New Surface Discoveries

High-grade copper grab samples up to 13.5% Cu + strong Quartz-Sericite-Pyrite zone with up to 6.23 grams per tonne Au

5

Classic Laramide Porphyry Open in 3 Directions

Significant expansion potential north, west & at depth

6

Clear 2026 Catalyst Path

Active geochem, drone magnetics & first-phase drilling (1,500-2,000 m) in Q4 or Q1 2027

7

Seasoned Board & Management

Proven track record from grassroots exploration to discovery and development, backed by deep capital markets expertise.



Zona Metals Corp.

228 - 1122 Mainland Street
Vancouver, BC V6B 5L1

Barry Greene
Chief Executive Officer & Director

zonametals.com

E: BarryGreene@tuckamorecapital.com